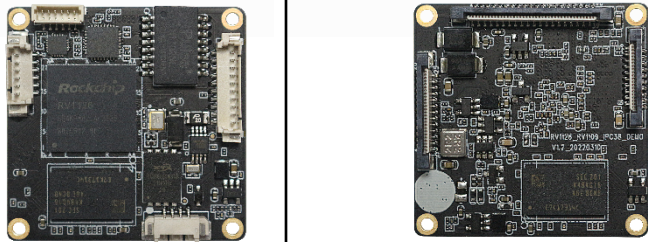
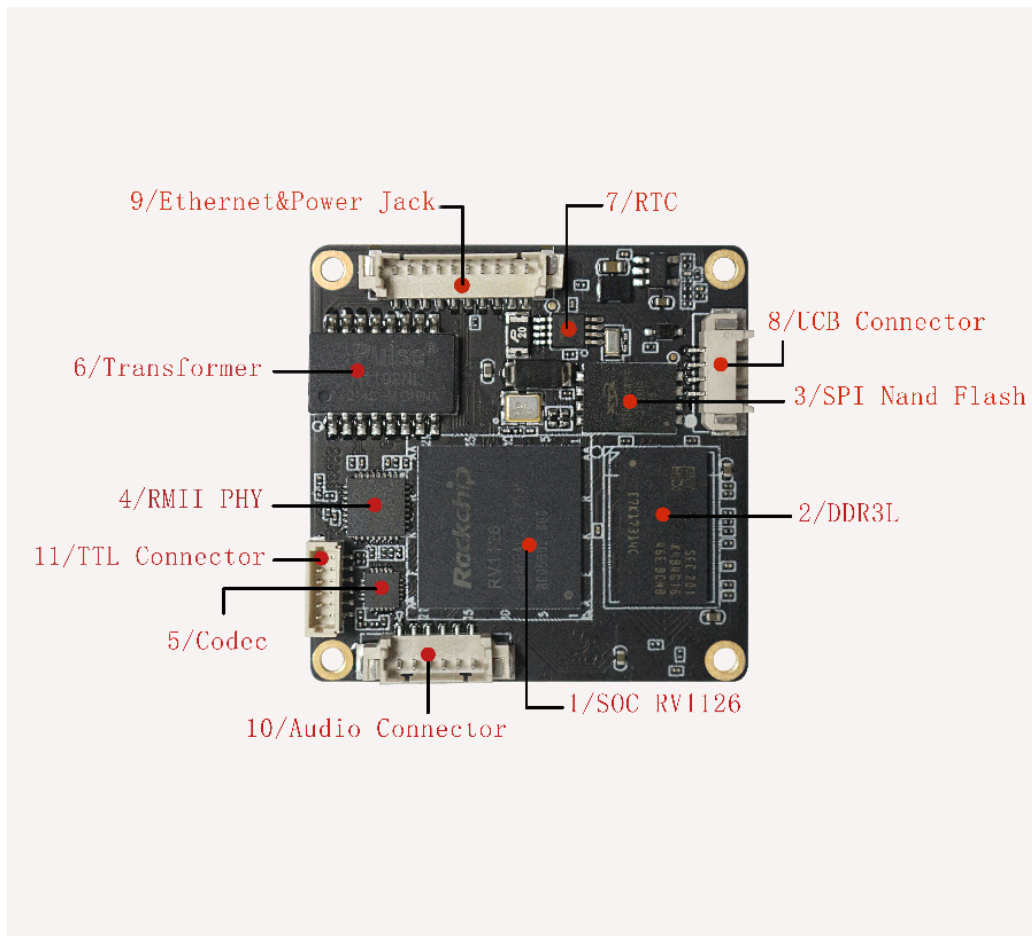


RV1126 Specification Data Sheet

structure parameters	Appearance: socket type
	Core board size: 38mm*38mm*3mm
	Pin pitch: 1.25mm, 0.5mm
	Number of pins: 4pin 6pin 10pin; 20pin 26pin 40 pin
	process: 6-layer immersion gold process is used to design
system configuration	CPU: RV1109/RV1126, dual-core/quad-core A7@1.5 GHz
	NPU: RV1109 1.2T, RV1126 2T
	Memory: using dual-channel DDR3 design, standard 8GB, customizable
	storage : The default 2Gbit SPI can support up to 4Gbit SPI
	video decoder Video decoding: support 4K/30 frame codec, format codec
	Ethernet: use RTL8201F Fast Ethernet RJ45
interface parameters	SENSOR interface: interface input MIPI-IMX307LQR-C, IMX347LQR-C, IMX415-AAQR-C.
	LCD interface: MIPI interface output
	audio interface: analog mark input
	SD card interface: 1 channel SDIO output channel
	Ethernet interface: Fast Ethernet RJ45
	USB HOST interface: 1 channel HOST2.0
	USB OTG interface: 1 channel OTG2.0
	UART interface: 1 channel serial port, supports serial port with flow control
	PWM interface: 2 channel PWM output
	IIC interface: 5 channel IIC output
	SPI interface: 1 channel SPI output
Electrical characteristics	Input voltage: 5V-12V
	Output voltage: 3.3/5V
	Storage temperature: -30~80 degrees
	Operating temperature: 0~60 degrees
Other	system support: Linux, Ubuntu, and other systems
	We provide services: core module + hardware customization + software development + OEM/ODM
intelligent	Typical applications: IPC, Aiface recognition panel machine, face capture camera, video doorbell, no network and no power camera, express handheld, GPS navigation, man-machine interface, monitoring equipment, dronepod , video call/two-way voice/video conference system, etc.
Product picture	

RV1126 function interface definition

Front view:



1. SOC RV1126, Pin to Pin compatible with RV1109;

2. DDR3L (Samsung K4B4G1646E BCNB)

A 4G bit DDR3 K4B4G1646E BCNB is attached to the front and back of the entire board, with a total of 8G bit DDR3;

3. SPI Nand Flash:

A version is equipped with 2G bit SPI Nand Flash XT26G02AWSEGA

B version is equipped with 4G bit SPI Nand Flash XT26G04AWSEGA

4. RMII PHY (RTL8201F)

5. Codec (ES8311)

6. Transformer (network isolation transformer MS10232ANL)

7. RTC (BM8563)

8.USB Connector

in1	VCC5V0_OTG
Pin2	OTG_DM
Pin3	OTG_DP
Pin4	GND

9.Ethernet&Power Jack

Pin1	TX+
Pin2	TX-
Pin3	RX+
Pin4	RX-
Pin5	LED0/PHYAD0
Pin6	LED1/PHYAD1
Pin7	UART3_TX_485
Pin8	UART3_RX_485
Pin9	GND
Pin10	VCC12V_DCIN

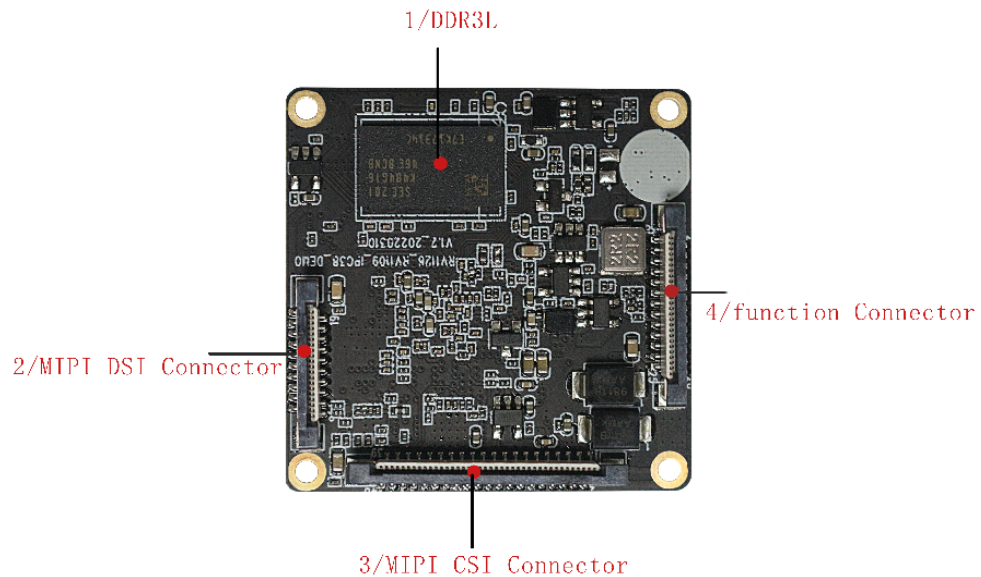
10.Audio Connector

Pin1	LED1/PHYAD1
Pin2	LED0/PHYAD0
Pin3	RESET
Pin4	MICP
Pin5	GND
Pin6	LINE_OUT

11.TTL Connector

Pin1	RX
Pin2	TX
Pin3	GND
Pin4	FSPI_DO
Pin5	GND
Pin6	RECOVERY

Reverse view:



1.DDR3L (Samsung K4B4G1646E BCNB)

One 4Gbit DDR3 is attached to the front and back of the entire board, total 8G bit;

2.MIPI DSI Connector

Pin1	IRQ
Pin2	PWR_EN
Pin3	RST
Pin4	I2C3_SDA
Pin5	I2C3_SCL
Pin6	GND
Pin7	MIPI_DSI_D2P
Pin8	MIPI_DSI_D2N
Pin9	MIPI_DSI_D1P
Pin10	MIPI_DSI_D1N
Pin11	MIPI_DSI_D3N
Pin12	MIPI_DSI_D3P
Pin13	MIPI_DSI_D0N
Pin14	MIPI_DSI_D0P

Pin15	GND
Pin16	MIPI_DSI_CLKN
Pin17	MIPI_DSI_CLKP
Pin18	GND
Pin19	VCC_12V
Pin20	VCC_12V

3.MIPI CSI Connector

Pin1	VCC3V3_SYS
Pin2	VCC3V3_SYS
Pin3	SPI0_CLK
Pin4	LED_PWM
Pin5	SPI0_CS0N
Pin6	SPI0_MISO
Pin7	SPI0_MOSI
Pin8	I2C1_SDA
Pin9	I2C1_SCL
Pin10	MIPI_RX0_PDN
Pin11	MIPI_RX0_RST
Pin12	GND
Pin13	MIPI_CSI_RX0_CLKP
Pin14	MIPI_CSI_RX0_CLKN
Pin15	GND
Pin16	MIPI_CSI_RX0_D2P
Pin17	MIPI_CSI_RX0_D2N
Pin18	MIPI_CSI_RX0_D3P
Pin19	MIPI_CSI_RX0_D3N
Pin20	MIPI_CSI_RX0_D1P
Pin21	MIPI_CSI_RX0_D1N
Pin22	MIPI_CSI_RX0_D0P
MIPI_CSI_RX0_D0N	Pin23
Pin24	GND
Pin25	MIPI_CSI_CLK0
Pin26	GND
Pin27	PWM8
Pin28	IRC_AIN
Pin29	PWM11
Pin30	PWM9
Pin31	IRC_BIN
Pin32	ZOOM_EN
Pin33	PWM10
Pin34	P-IRIS_EN
Pin35	FOCUS_EN

Pin36	ADC_IN
Pin37	GND
Pin38	VCC_1V8
Pin39	VCC_12V
Pin40	VCC_12V

4 .Function Connector

Pin1	HOST_DM
Pin2	HOST_DP
Pin3	GND
Pin4	GND
Pin5	ALARM_IN1
Pin6	ALARM_OUT1
Pin7	SDMMC0_DET
Pin8	SDMMC0_PWREN
Pin9	USB_PWREN
Pin10	GND
Pin11	SDMMC0_D2
Pin12	SDMMC0_CMD
Pin13	SDMMC0_D1
Pin14	SDMMC0_D0
Pin15	SDMMC0_D3
Pin16	SDMMC0_CLK
Pin17	GND
Pin18	RS485_CTL
Pin19	UART3_RX_485
Pin20	UART3_TX_485
Pin21	KEY_SET
Pin22	VCCV3_RTC
Pin24	GND
Pin23	VCC_12V
Pin25	VCC_12V
Pin26	GND